



imageRUNNER
ADVANCE

C2230 / C2225 / C2220 / C2220L

Canon

Delighting You Always



ADVANCED MADE SIMPLE FOR YOU



Business **can** be simple

THE SIMPLEST WAY TO **ADVANCE** YOUR BUSINESS

The all new **imageRUNNER C2200** series offers your business a sound economical investment. With this multifunctional device, you can perform essential functions such as full color print, scan, fax, and send.

And when you need more, you can expand its capabilities with optional upgrades, cloud technology and office document solutions.

The imageRUNNER ADVANCE C2200 series.
To advance your business — start here.



The **imageRUNNER ADVANCE C2200 series** has been designed from the onset to offer you the following:

ADVANCED
Environment Responsibility
for our future.

ADVANCED
Management
that puts you in control.

ADVANCED
Scalability
that grows with you.

ADVANCED
Workflow
to suit your needs.

ADVANCED
Usability and Convenience
that is centered on you.

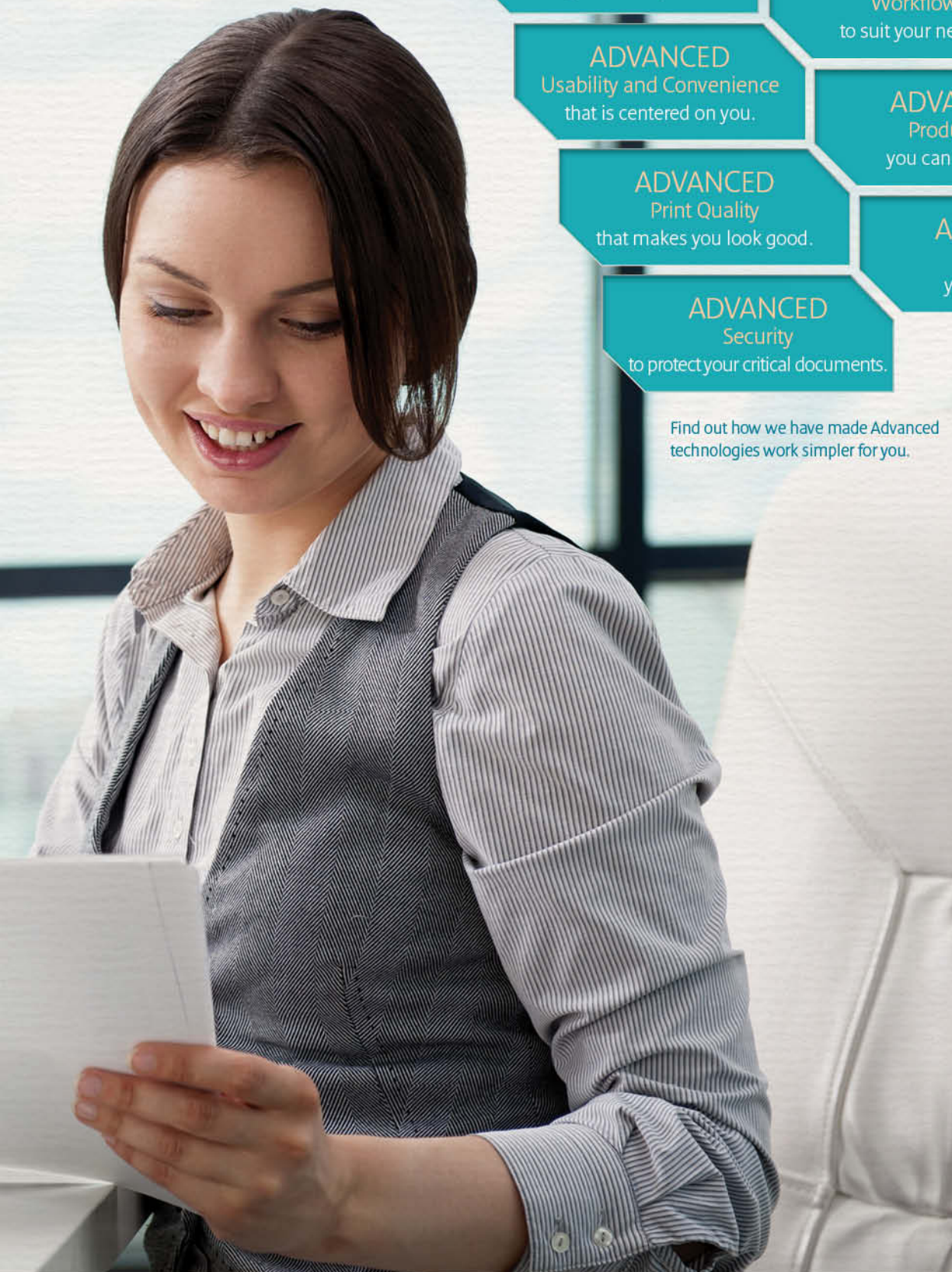
ADVANCED
Productivity
you can measure.

ADVANCED
Print Quality
that makes you look good.

ADVANCED
Solutions
you can rely on.

ADVANCED
Security
to protect your critical documents.

Find out how we have made Advanced technologies work simpler for you.



ADVANCED USABILITY AND CONVENIENCE

Meet the multifunctional device that is optimized for convenience and speed - your way.



MAINTAIN YOUR PRODUCTIVITY

The imageRUNNER ADVANCE C2200 series is designed to keep your business going. The inbuilt paper sensor is also intelligent enough to detect paper sizes accurately, reducing paper jams and misfeeds.



INTUITIVE USER INTERFACE



A full-color 7" high resolution TFT touchscreen provides wide viewing angles and exceptional clarity. The intuitive Main Menu gives you instant access to essential system functions, while being fully configurable to suit individual and workgroup preferences. You can also streamline complex tasks and workflows to run at the touch of a single button with Quick Menu.

STEP-BY-STEP TUTORIAL

The inbuilt onscreen tutorial helps you explore the full capabilities of the imageRUNNER ADVANCE C2200 series, and enables you to learn and use more advanced functions with ease.



WALK UP CONVENIENCE

The imageRUNNER ADVANCE C2200 series comes with a USB port that lets you scan to or print* files directly from your USB drive or memory card at the device.

* Optional accessories are required for print.



ADVANCED PRINT QUALITY

Quality prints that truly shine.

HIGH RESOLUTION BRILLIANT PRINTOUTS



1200x1200 dpi printing resolution provides you with sharp and vivid printouts. Matched with the pQ Toner and an intelligent controller, the imageRUNNER ADVANCE C2200 series truly brings you the crispest, most vibrant color printouts.



GENUINE ADOBE POSTSCRIPT 3

The imageRUNNER ADVANCE C2200 series supports Genuine Adobe PostScript 3 printing capability. This enables you to deliver the desired printout quality without worries of font incompatibility. Work seamlessly with Postscript workflow and achieve faster, higher quality printouts – not just emulations. Direct PDF printing and full support of Adobe fonts also translates to improved office productivity.

** For C2220L, additional installation of optional 2.5" inch 80GB HDD-E1 is required.*



ADVANCED imageCHIP SYSTEM ARCHITECTURE

Canon's dual processor system meets the rigorous demands of today's businesses. The image processor board works with the scanner, adjusts images and provides superior image processing. In tandem, the information processor controls the user interface and coordinates device networking and connectivity. Together, they give you better results with lesser wait.



ADVANCED PRODUCTIVITY

Advanced technology becomes simple with the Canon imageRUNNER ADVANCE. Simply add the modular units you need to further extend the functions of your device.

2-LINE FAX

Add on Super G3 fax functionality for high-speed fax transactions. The 2-line fax feature is capable of handling large volumes of fax documents, while ensuring lesser busy signals and greater connectivity.

HIGH SPEED SCANNING

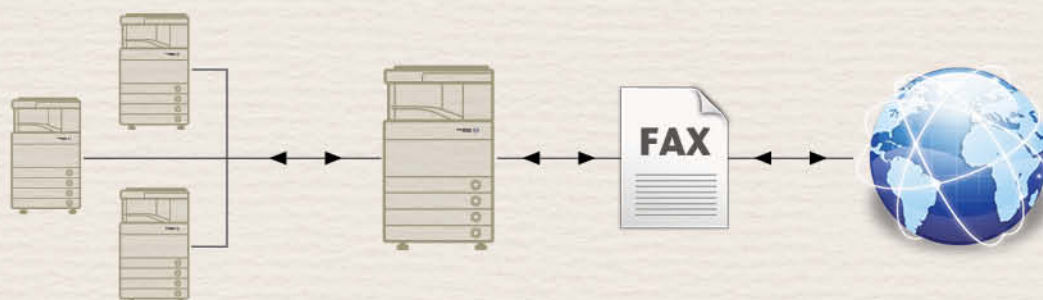
Using the optional document feeder, you can archive your documents and create up to 50 crystal clear reproduction of black & white and color documents each time you press the button. What's more, at a speed of 50 ipm in black & white or color, you no longer need to spend as much time waiting at the device.

PROFESSIONAL LOOKING DOCUMENTS

Impress your business associates and colleagues alike with professional-grade documents. Select the settings you want, ranging from automatic stapling, punching, collation and even booklet creation function. For a compact footprint, internal stapling and collating units are also available as options.

REMOTE FAX COLLABORATION

With the optional Remote Fax Kit, you can also fax through other fax-capable imageRUNNER ADVANCE devices in the network, even if the one you are using does not have a fax board installed. This means significant cost-saving and convenience.



Remote Fax Kit installed device

Fax-enabled device

ADVANCED WORKFLOW

The Canon imageRUNNER ADVANCE series is designed to streamline workflow and meet each user's needs. You can easily send, save, store, and access scanned documents in multiple locations. Simply select a destination and scan the original. With the imageRUNNER ADVANCE series, you will find the most advanced, yet simple workflow.

SCAN AND SEND

In one simple operation, you can distribute scanned documents to multiple destinations, such as email, fax destinations and network folders. The wide range of formats* includes standard High Compression PDF, Adobe PDF Reader Extensions, Searchable PDF, Encrypted PDF, XPS, and even the latest Office Open XML for Word and PowerPoint.



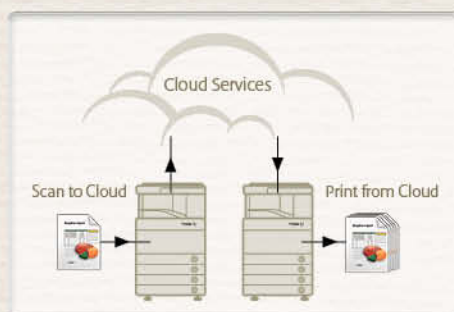
* Installation of optional accessories may be required.

CANON CLOUD CONNECT

Canon imageRUNNER ADVANCE series maximizes office productivity by allowing users to access Cloud services right from the devices. Users can scan and store their paper documents, or choose to retrieve and print their documents stored in their Cloud service. With the Cloud Scan and Cloud Print support of Google Docs and Microsoft SharePoint Online, imageRUNNER ADVANCE systems are the perfect way to scan and print through Cloud services.

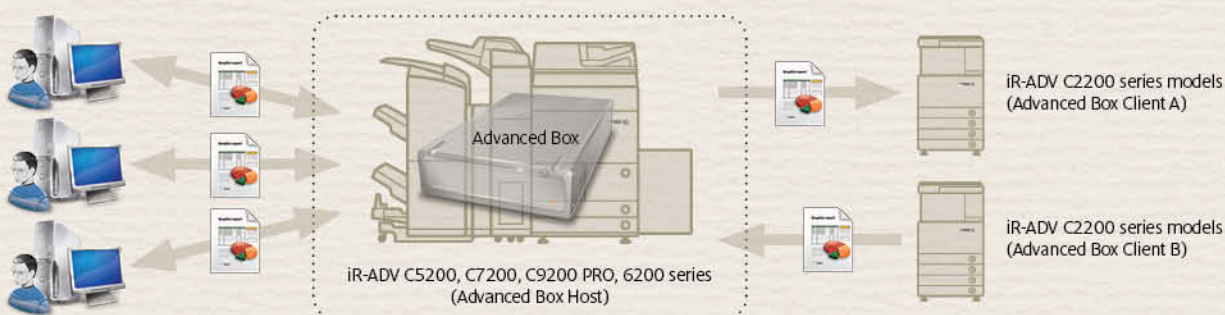
* For iR-ADV C2220L, installation of HDD is required.

** Internet connection and upgrades may be required to support Cloud services, and Cloud services may vary by country or region.



STORE AND ACCESS WITH EASE

Canon's new built-in document sharing solution simply makes sense. Multiple users can collaborate easily on a shared folder and access files from PCs or other networked imageRUNNER ADVANCE systems. Personal folders are also available for more sensitive documents. What's more, you can also preview the documents before printing them.



Send or retrieve files from your C2200 series models when networked with higher-end imageRUNNER ADVANCE models with the Advanced Box feature.

ADVANCED MANAGEMENT AND SECURITY

Be in control, wherever you are. The imageRUNNER ADVANCE makes it easy to monitor and optimize your company's output.

CENTRALIZED REMOTE CONTROL

The Remote User Interface lets IT managers and system administrators control, track, and manage each output device without having to travel to each and every machine for status checks.

eMAINTENANCE

Take control of your Canon device fleet and reduce administration burdens with eMaintenance*. With less downtime and easy maintenance, you will have longer uptime and greater productivity.

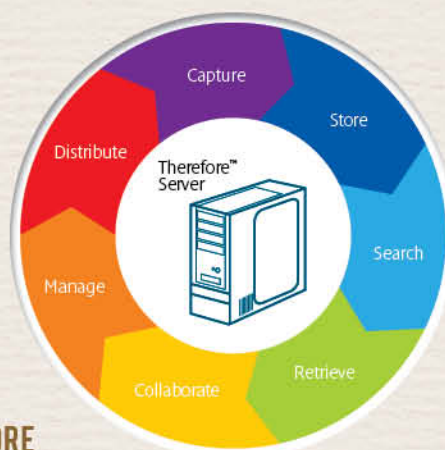
** Compatible with most Canon copiers, printers and multifunctional devices. For more information on what models are supported, please contact Canon.*

ACCESS MANAGEMENT SYSTEM KIT

By utilizing the Access Management System Kit, administrators can restrict the functions that each individual, workgroup or department is allowed to use. Together with the contactless Card Authentication unit to identify the actual user, you will enjoy higher levels of security and reduced wastage from unauthorized prints.

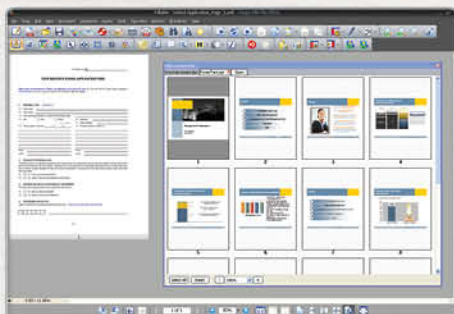
ADVANCED SOLUTIONS

To achieve even more with the imageRUNNER ADVANCE system, select the document solution that best meets your organizational needs.



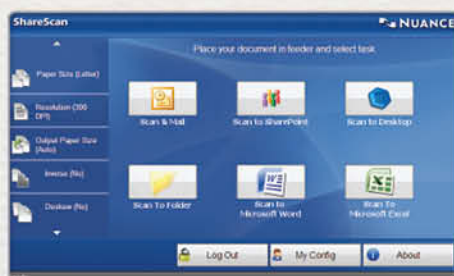
THEREFORE

Therefore is a holistic document management system that offers an easy-to-implement storage and retrieval system to give every staff instant, secure access to all information.



eCOPY PDF PRO OFFICE

eCopy® PDF Pro Office, the latest enterprise-ready PDF solution from Nuance, is the smarter PDF desktop software companion to Canon MFDs. This powerful, easy-to-use PDF solution that lets you create, convert, and collaborate for increased productivity and cost savings.



eCOPY SHARESCAN SUITE

eCopy® ShareScan Suite transforms paper-based data safely and directly into electronic workflows. From the imageRUNNER ADVANCE device, you can scan, extract, classify, index and convert paper information into digital information that flows effortlessly into and through the electronic channels of your business.



uniFLOW

uniFLOW is designed to save you time and money by providing effective controls over your entire print and multi-functional device fleet. The uniFLOW solution can be built from several different components depending on your needs.

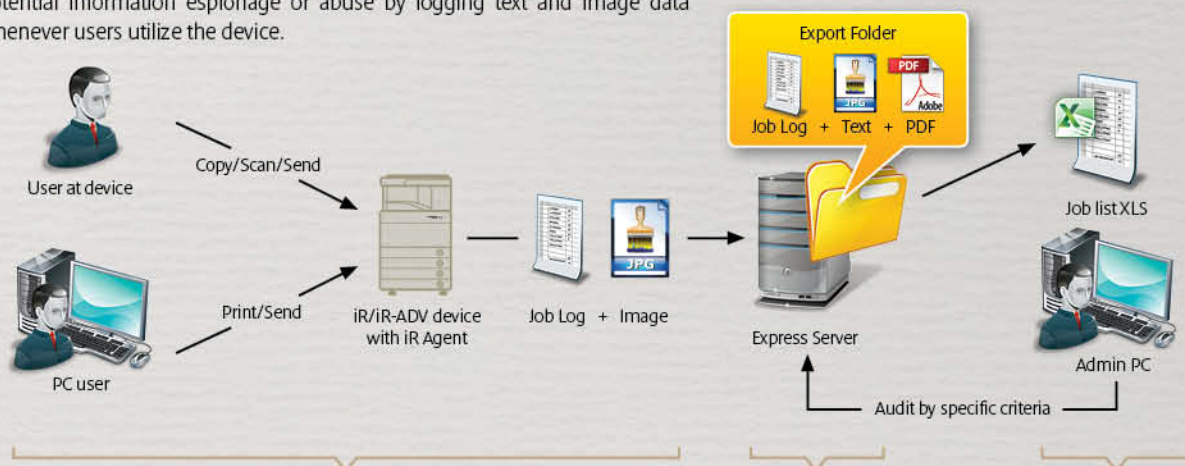
iw ACCOUNTING MANAGER FOR MEAP

Track your organization's print consumption through detailed and vital information of how your devices are actually used, all without the need for additional manpower or equipment.



iw SECURE AUDIT MANAGER EXPRESS

This software enables document distribution oversight and safeguards against potential information espionage or abuse by logging text and image data whenever users utilize the device.



01 On-device imageRUNNER Agent captures log and image data

02 Info is sent to Express server for OCR; image and text exported

03 Express Audit Tools allows compilation and extraction of key info



ADVANCED RESPONSIBILITY

Much of the above features are geared towards efficiency and waste reduction. At Canon, we believe in doing our part for the environment.

Here are some highlights:

100% RECYCLED PLASTIC & 100% RESPONSIBLE

Every imageRUNNER ADVANCE is built from 100% recycled plastics from past products. In addition, we subject ourselves to the most stringent standards, restricting the use of 24 hazardous substances (where EU RoHS directives restrict only six).

ENERGY SAVER IN EVERY WAY

The imageRUNNER ADVANCE C2200 series features the self-lit Energy Saver hard key instead of the conventional Power hard key. This minimizes power consumption when the device goes to sleep mode.

HIGHER EFFICIENCY MEANS LOWER EMISSIONS

By optimizing the document life cycle, we have lowered CO₂ emissions by more than 30% over previous models.

CHANGING OUR BEHAVIOR TO CONSERVE OUR ENVIRONMENT

By encouraging digital workflows, we reduce unnecessary prints and reduce mistakes. Administrators can also help encourage use of duplex settings and control color usage easily.

SCHEDULED TO SAVE

Administrators can opt to automatically shut down devices at a scheduled date and time. This reduces unnecessary wastage during after office hours and non-working days.

GREEN ON THE INSIDE

pQ toner feature lowers energy consumption via lower heat and power requirements. Our RAPID fusing technology saves 75% more power usage. Our list of green technologies goes on.

MAKE IT ADVANCE.

Witness the significant improvement in your business communication capabilities. Move your business forward with the new imageRUNNER ADVANCE C2200 series today.

To arrange for a demonstration, simply contact any of our sales staff in the relevant contact overleaf.

SPECIFICATIONS imageRUNNER ADVANCE C2200 Series

Type	Desktop
Maximum Original Size	A3
Copy Sizes	Cassette 1 C2230/C2225/C2220: A3, B4, A4, and B5 C2220L: A3, B4, A4, A4R, B5, B5R, A5R, and Custom size (148 x 182mm to 297 x 420mm) Cassette 2 C2230/C2225/C2220: A3, B4, A4, A4R, B5, B5R, A5R, Custom Size (139.7 x 182mm to 304.8 x 457.2mm), and Envelopes *Optional for C2220L Stack Bypass 305 x 457mm, 320 x 450mm (SRA3), A3, B4, A4, A4R, B5, B5R, A5, A5R, Custom Size (99 x 139.7mm to 320 x 457.2mm), and Envelopes** (Optional)
Resolution	Reading 600dpi Copying 600dpi Printing 1200dpi x 1200dpi (text/line only)
Copy/Print Speed	A4 C2220L: 20ppm (B&W/Color) C2220: 20ppm (B&W/Color) C2225: 25ppm (B&W/Color) C2230: 30ppm (B&W/Color) A3 C2220L: 15ppm (B&W/Color) C2220: 15ppm (B&W/Color) C2225: 15ppm (B&W/Color) C2230: 15ppm (B&W/Color)
Magnification	Zoom 25-400%
First Copy Time	Black-and-White 5.9sec Full Color 8.9sec
Warm-Up Time	34 seconds
Multiple Copies/Prints	1 to 999 sheets
Duplexing	Standard automatic stackless
Paper Weight	Cassette 1 64 to 120gsm Cassette 2* (Optional for iR-ADV C2220L) 64 to 163gsm Stack Bypass 64 to 220gsm Duplex 64 to 120gsm
Paper Capacity	Standard Cassette 1 (80gsm): 520 sheets Cassette 2 (80gsm): 550 sheets (Optional for iR-ADV C2220L) Stack Bypass (80gsm): 100 sheets Optional 550 sheets x 2 cassettes (80gsm) Total maximum capacity 2,270 sheets
CPU	1.67GHz
Memory	Standard: 2GB RAM
Hard Disk Drive	Standard 160GB for iR-ADV C2230/C2225/C2220 Optional for iR-ADV C2220L
Interface	Ethernet (1000Base-T/100Base-TX/10Base-T)
Power Supply	220-240V AC, 50/60Hz
Power Consumption	1.5KW max
Toner (Estimated Yield @ 5% coverage)	23,000 (B&W); 19,000 (Cyan, Magenta and Yellow)
Drum Yield	iR-ADV C2220/C2220L 43,000 (B&W); 36,000 (Cyan, Magenta and Yellow) iR-ADV C2230/C2225 53,000 (B&W); 44,000 (Cyan, Magenta and Yellow)
Dimensions (W x D x H)	Main Unit Only: iR-ADV C2230/C2225/C2220 - 565mm x 680mm x 791mm iR-ADV C2220L - 565mm x 650mm x 791mm
Weight	Main Unit Only: iR-ADV C2230/C2225/C2220 - Approximately 79kg iR-ADV C2220L - Approximately 75kg With DADF: iR-ADV C2230/C2225/C2220 - Approximately 86.9kg iR-ADV C2220L - Approximately 82.9kg

Print Specification	
PDL	UFR II (Standard), PCL 5/6 (Optional), Adobe PostScript 3 (Optional)
Resolution	1200dpi x 1200dpi (Text/Line only), 600dpi x 600dpi
Memory	2GB (Uses Main Unit RAM)
Hard Disk	Standard 160GB for iR-ADV C2230/C2225/C2220 Optional for iR-ADV C2220L
CPU	Canon Custom Processor, 1.67GHz (Uses Main Unit CPU)
PS Fonts	Roman 136
PCL Fonts	Roman 93, Bitmap10, OCR2
Supported OS	PCL Windows XP/Server2003/Vista/Server2008/Windows7/Server 2008 R2/Windows 8 Adobe PostScript 3 Windows XP/Server2003/Vista/Server2008/Windows7/Server 2008 R2/Windows 8, Mac OS X (10.4.9 or later)
UFR II	Windows XP/Server2003/Vista/Server2008/Windows7/Server 2008 R2/Windows 8, Mac OS X (10.4.9 or later)
Mac-PPD	Mac OS 9.1 or later, Mac OS X (10.2.8 or later)
Interface	Ethernet (1000Base-T/100Base-TX/10Base-T) Wireless LAN (IEEE802.11b/g, Optional), USB2.0
Network Protocol	TCP/IP (LPD/Port9100/WSD/IPP/PPS/SMB/FTP), IPv6, IPX/SPX (NDS, Bindery), AppleTalk
Pull Scan	Network TWAIN Driver

Send Specification (Optional for iR-ADV C2220L)	
Scan Resolution	100dpi, 150dpi, 200 x 100dpi, 200dpi, 200 x 400dpi, 300dpi, 400dpi, 600dpi
Destinations	E-Mail/Internet FAX (SMTP), PC (SMB, FTP), WebDAV, Google Docs and Microsoft SharePoint Online with iR-ADV Cloud Connect MEAP application.
Address Book	LDAP, Local (Max.1800)
File Format	TIFF, JPEG, PDF, XPS, High compression PDF/XPS, PDF/A-1b, Optimize PDF for Web, OOXML (.PPTX only) (*To use Optimize PDF for Web, HDD installation is required for iR-ADV C2220L)

Optional Accessories	
Universal Send Advanced Feature Set-D1	
File Format	Outline PDF (Trace & Smooth), Searchable PDF/XPS, Reader Extensions PDF, OOXML (.PPTX only)

Universal Send Security Feature Set-D1	
File Format	Encrypted PDF, Device Signature PDF/XPS

Duplex Automatic Document Feeder-A11	
Paper Size	A3, B4, A4, A4R, A5, A5R, B5, B5R, or B6

Paper Weight	1-sided scanning: 42 to 128gsm 2-sided scanning: 50 to 128gsm
Max. Number of Originals	50 sheets (80gsm) Copying: 1-sided scanning - 30 sheets/minute (A4 in B&W/Color at 600dpi)

Document Scanning Speed (Max.)	Scanning: 1-sided scanning - 51 sheets/minute (A4 in B&W/Color at 300dpi)
Dimensions (W x D x H)	565mm x 540mm x 135mm

Weight	Approx. 7.9kg
Cassette Unit-X1 (Only for iR-ADV C2220L)	
Paper Size	A3, A4, A4R, A5R

Paper Weight	Custom Size 139.7 x 182mm to 304.8 x 457.2mm
Paper Capacity	64 to 163gsm 550 sheets (80gsm) x 1 cassette

Cassette Feeding Unit-AF1	
Paper Size	A3, B4, A4, A4R, B5, B5R, A5R

Paper Weight	Custom Size 139.7 x 182mm to 304.8 x 457.2mm
Paper Capacity	64 to 163gsm 550 sheets (80gsm) x 2 cassettes

Dimensions (W x D x H)	565mm x 650mm x 248mm
Weight	Approx. 27.5kg

Inner Finisher F1	
Number of Trays	One stack tray (Optional 2nd Tray)

Tray Capacity	A4, A5, A5R A4-A5R: 750 sheets A3, A4R A3, A4R: 500 sheets
Staple Position	Corner, Double

Staple Capacity	A4: 50 sheets A3: 30 sheets
Dimensions (W x D x H)	590mm x 550mm x 260mm

Weight	Approx. 14.0kg (when the optional Inner Finisher Additional Tray-F1 is attached)
Other Optional Accessories	

Platen Cover Type S, Copy Tray Unit-J1, Utility Tray-A2, Inner 2 way Tray-F1, 3 Way Unit-C1, Inner Finisher Additional Tray-A1, Buffer Pass Unit-K1, Staple Finisher-M1, Booklet Finisher-M1, Envelope Feeder Attachment-D1, Serial Interface Kit-K1, Copy Control Interface Kit-A1, Copy Card Reader Attachment-B3, Copy Card Reader-F1, FL Cassette-AM1, FL Cassette-AN1, Stamp Ink Cartridge-C1, Stamp Unit-B1, Staple Cartridge-D3, Staple Cartridge-J1, Cassette Heater Unit-37, Reader Heater-J1 200V, PCL Printer Kit-AT1, PS Printer Kit-AT1, Barcode Printing Kit-D1, Direct Print Kit (for PDF)-H1, Direct Print Kit (for XPS)-H1, Canon Color Universal Send Kit-R1, Super G3 Fax Board-AH2, Super G3 2nd Line Fax Board-AH1, Remote Fax Kit-A1, Web Access Software-H1, Multimedia Reader/Writer-A2, USB Device Port-E2, Secure Watermark-B1, Universal Send Digital User Signature Kit-C1, Removable HDD Kit-AE1, iR-ADV Security Kit-D1, HDD Encryption Kit-C3, 2.5inch/80GB HDD-E2, Encrypted Printing Software-D1, Document Scan Lock Kit-B1, Access Management System Kit-B1, ADF Access Handle-A1, Remote Operators Software Kit-B1, Voice Guidance-F2, Voice Operation Kit-C2

This brochure and the specifications of the product have been developed prior to the date of product launch. These specifications are subject to change without notice. Therefore no representations or warranties, either express or implied, are made of the fitness of this product for a particular purpose. In no circumstances shall the information in this brochure be considered part of our terms and conditions of sale. You are advised to check the prevailing specification immediately prior to purchase. All company and/or product names are trademarks and/or registered trademarks of their respective manufacturers in their markets and/or countries.





Integrated Solutions



iR ADVANCE Features



Cloud Computing

To integrate more capabilities into your imageRUNNER ADVANCE device, simply speak with your friendly Canon representative.



Delighting You Always

SOUTH & SOUTHEAST ASIA REGIONAL HEADQUARTERS

Canon Singapore Pte. Ltd.

1 HarbourFront Avenue #04-01, Keppel Bay Tower, Singapore 098632

Tel: +65-6799 8888 | Fax: +65-6799 8882 | www.canon-asia.com | www.canon.com.sg

CANON SALES SUBSIDIARIES & BUSINESS PARTNERS

Afghanistan:

Megaplus Afghanistan Limited

House No. 233, Street No. 4, Charagh Ali, Qilla-e-Fatehullah, Kabul, Afghanistan

Tel: 93-700 228 832 / 93-700 979 511 | Fax: 93-202 201 259

Email: info@megaplus.com.af

Bangladesh:

Flora Limited

Adamjee Court Annex-2 (4th Floor), 119-120 Motijheel Commercial Area

Dhaka 1000 Bangladesh

Tel: 880-2-716-2742-46 / 225 | Fax: 880-2-955-0030 | www.floralimited.com

Brunei:

Interhouse Company

No. 5-7 Bunut Jaya Complex, Spg 574 Jalan Tutong BF1320,

P.O. Box 423, Seri Complex, Bandar Seri Begawan BA 1779, Brunei Darussalam

Tel: 673-2-653-001 | Fax: 673-2-653-003

Cambodia:

Royal Cambodia Co., Ltd

#437 Preah Monivong Blvd, Phnom Penh, Kingdom of Cambodia

Tel: 855-23-428955 | Fax: 855-23-722961

Hong Kong:

Canon Hongkong Co. Ltd

19F, The Metropolis Tower, 10 Metropolis Drive, Hunghom, Hong Kong

Tel: 852-3191-2388 | Fax: 852-369-3800 | www.canon.com.hk

India:

Canon India Private Limited

7th Floor, Tower B, Building #5, DLF Cyber Terraces, DLF Phase-3

Gurgaon - 122002, Haryana, India

Tel: 91-124-416 0000 | Fax: 91-124-416 0011 | www.canon.co.in

Indonesia:

PT Samafitro

Jalan Ir. H Juanda No.8, Jakarta 10120, Indonesia

Tel: 62-21-345 8989 | Fax: 62-21-345 6699 | www.samafitro.co.id

Malaysia:

Canon Marketing (Malaysia) Sdn Bhd

Block D, Peremba Square, Saujana Resort Section U2, 40150 Shah Alam,

Selangor Darul Ehsan, Malaysia

Tel: 60-3-7844 6000 / 7845 0055 | Fax: 60-3-7844 6196 / 6198

www.canon.com.my

Maldives:

Simdi Company Pvt Ltd.

G.Manaam Building, 2/1 Neeloafaru Magu, Male' 20-129, Maldives

Tel: 960-333 4421 | Fax: 960-333 4424

Myanmar:

Myanmar Golden Rock International Co., Ltd

Level 6, FJV Commercial Centre, No: 422-426, Strand Road,

Botataung Township, Yangon, Myanmar

Tel: 95-1-202092 to 96 | Fax: 95-1-202079 | Email: sales@mgr.com.mm

Nepal:

International Electronics Concern (P) Ltd

Kha 14, 1st Floor, Haratibhawan Putalisadak, Ramshah Path,

Kathmandu, Nepal, P.O. Box 12588

Tel: 977-1-442 1991 | Fax: 977-1-442 1909

Pakistan:

Shirazi Trading Company (Pvt.) Ltd

8th Floor, Adamjee House, I.I. Chundrigar Road, Karachi 74000 Pakistan

Tel: 92-21-3241 (7659), (7737) or (7746) | Fax: 92-21-(3241 7747), (3242 0417)

or (3242 0418) | www.shirazitradings.com.pk

Philippines:

Canon Marketing (Philippines), Inc.

Ground Floor Commerce and Industry Plaza. Campus Ave. Cor. Park Ave.,

McKinley Hill, Fort Bonifacio, Taguig City

Tel: 632-884-9000 | Fax: 632-556-1456 | www.canon.com.ph

Sri Lanka:

Metropolitan Office (Pvt) Ltd

12, Magazine Road Colombo 08, Sri Lanka

Tel: 94-11-470 0200 | Fax: 94-11-470 0267

Thailand:

Canon Marketing (Thailand) Co. Ltd No.98 Sathorn Square Office Tower,

21st - 24th floor, North Sathorn Road, Silom, Bangrak, Bangkok 10500

Tel: 66-2-344 9999 | Fax: 66-2-344 9960 | www.canon.co.th

Vietnam:

Canon Marketing Vietnam Company Limited

Unit 6, 6th Floor, Saigon Centre, 65 Le Loi, District 1, Ho Chi Minh City, Vietnam

Tel: 84-8-3820 0466 | Fax: 84-8-3820 0477 | www.canon.com.vn

This document is for information purpose only and the contents are subject to change without notice. Product options, name and availability may vary by regions. Nothing in this document should be construed as a warranty. We expressly disclaim any liability or contractual obligations with respect to this document.

Canon, imageRUNNER, imageRUNNER ADVANCE, imageCHIP, RAPID Fusing System, MEAP, eMaintenance, iW, Business can be simple and get Smart get genuine are trademarks of Canon Inc. and/or its affiliates. Other names may be the trademarks of their respective owners.

uniFLOW, eCopy and Therefore are independent party software distributed by Canon Singapore Pte Ltd.

0172W093 © 2013 Canon Singapore Pte. Ltd.
All rights reserved. Printed in Singapore.